

YANMAR DIESEL SERVICE NEWS

Title	Color of Crankshaft Temper	No. : 99-2-G-04-039-L	Date : Apr, 19, 1999
Engine Model	All models	Applications	_____
		Applicable Engine Nos.	_____

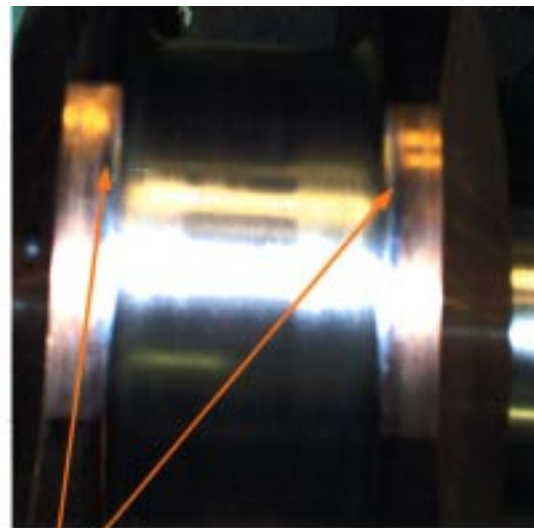
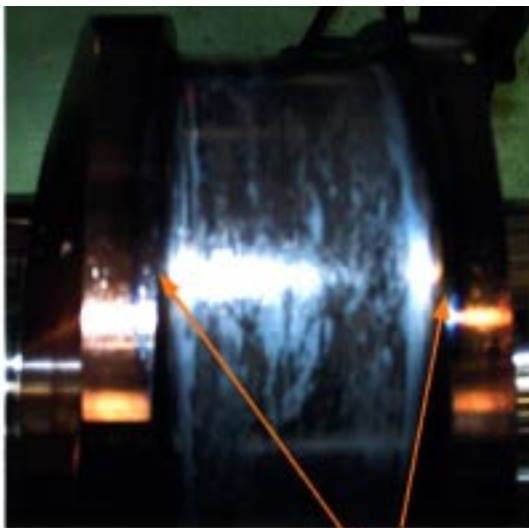
Inquiries on the color of crankshaft temper have often been sent to us. Some misunderstand this to be discoloring due to crankshaft seizure. In order to avoid such misunderstanding, we would like to inform you about the color of the tempering as follows:

The crankshaft journals and pins are provided with induction hardening to raise surface hardness (HS 65~85) and wear-resistance.

This induction hardening causes the surface of the journals and crank arm near the pin to be discolored, as shown in the photos below, (temper color due to extreme heat treatment). Journals and pins are processed after induction hardening and the color on these parts is removed, but there is no processing on the arm so the color remains there. This is not an abnormality.

Crank pin area after induction hardening

Crank pin area after processing



Color of Tempering

ヤンマーディーゼル株式会社 特機事業本部 尼崎工場 市場サービス部 FAX.No. : 06-6488-4003	YANMAR DIESEL ENGINE CO., LTD. AMAGASAKI WORKS MARKET SERVICE Dept. FAX.No. : +81-6-6488-4003	Approve 	Checked 	Drawing 
---	---	--	--	--